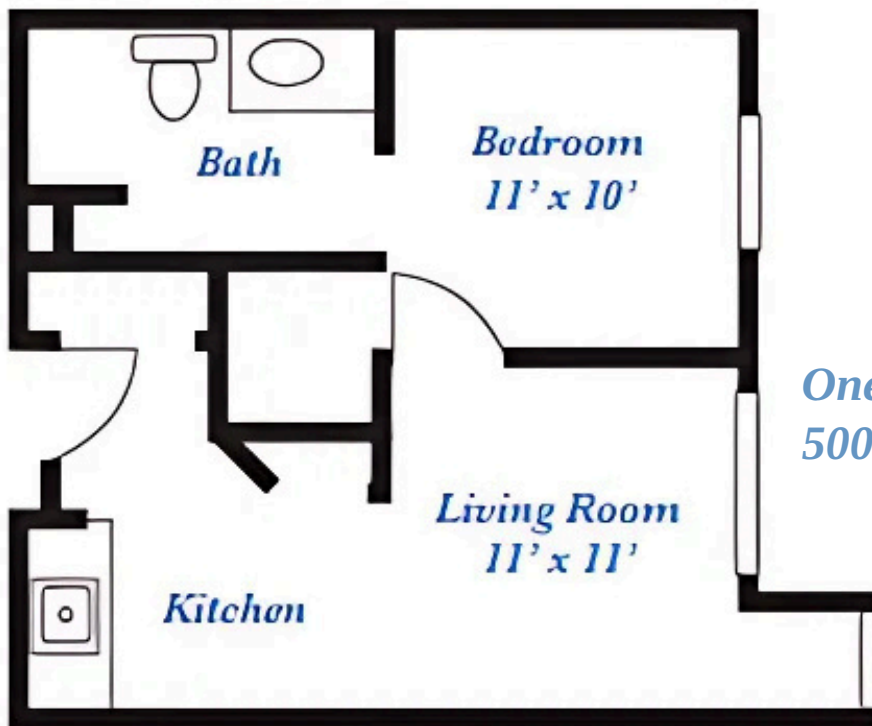
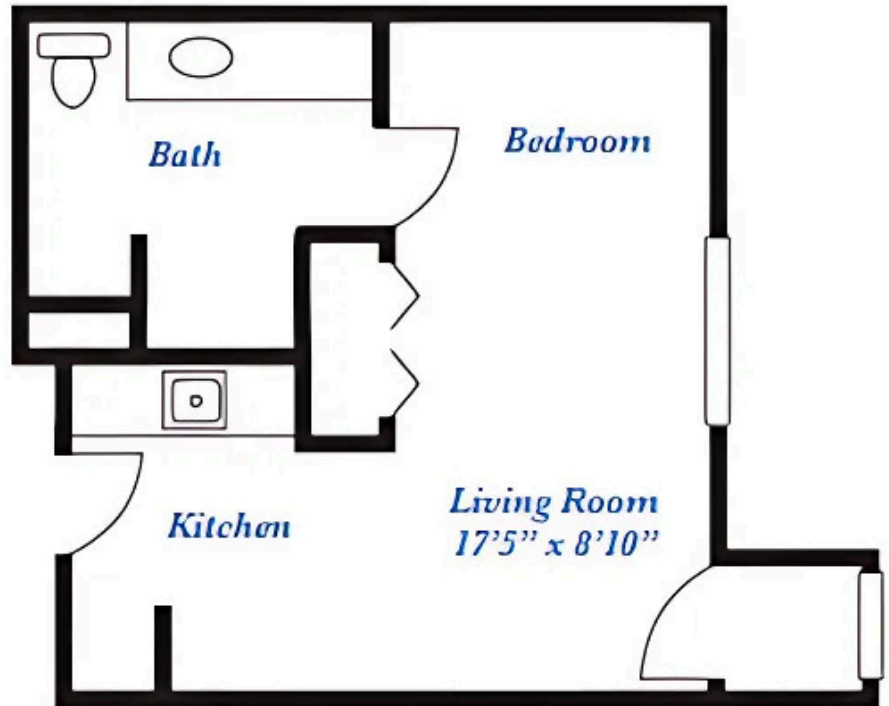




# KINSHIP POINTE

*Independent Living and Assisted Living*

*Studio*  
333 sq. ft.



*One Bedroom Deluxe*  
500 sq. ft.

Floor Plans range in size depending on location and availability. Contact Kinship Pointe to view current apartment availability.

**ASSISTED LIVING**  
*Studio & One Bedroom*

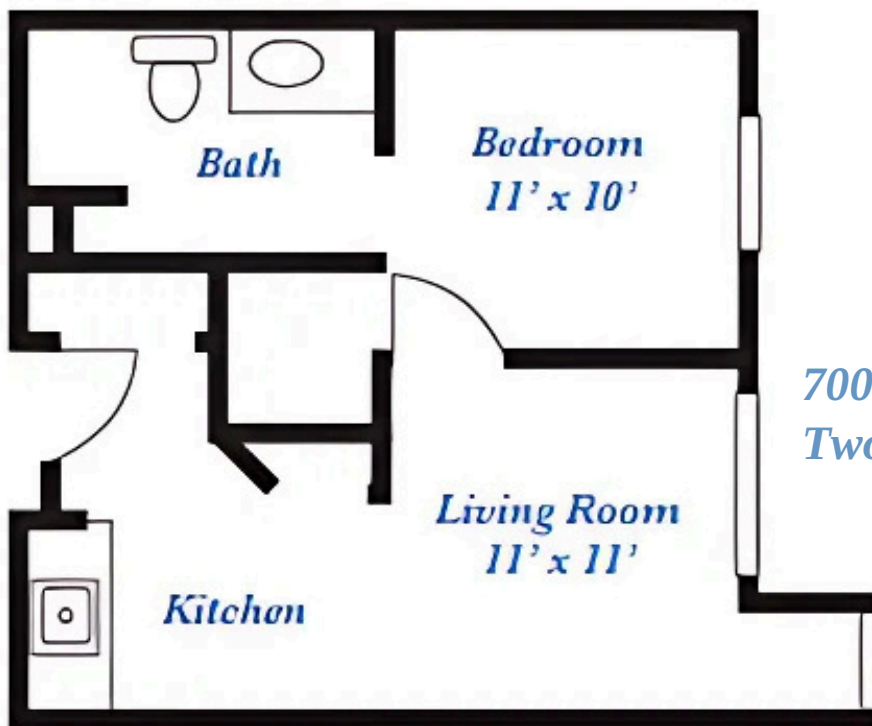
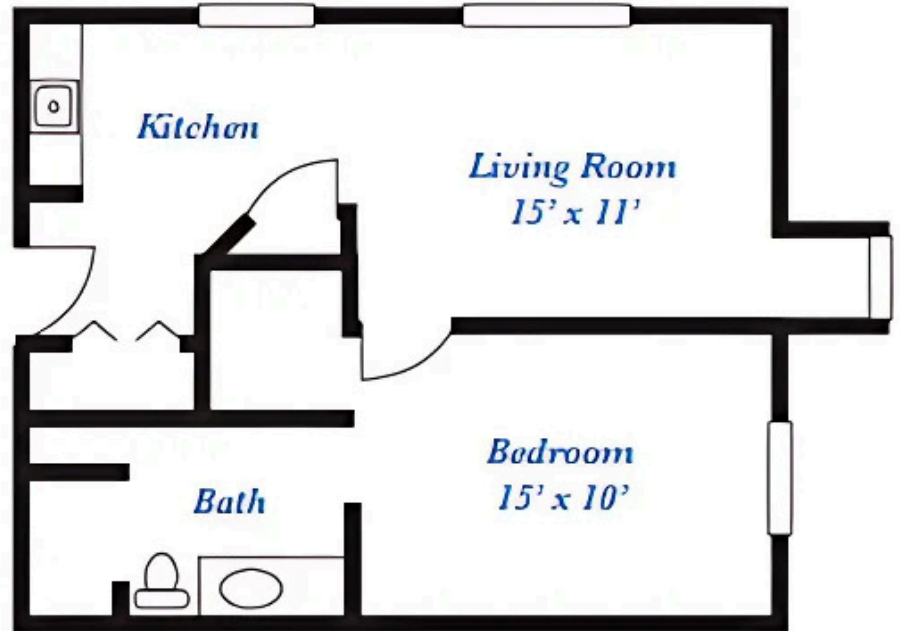
ACTUAL SQUARE FOOTAGE MAY VARY

 An Omega Senior Living Community





*One Bedroom Grand*  
570 sq. ft.



700 sq. ft.  
*Two Bedroom Premier*

Floor Plans range in size depending on location and availability. Contact Kinship Pointe to view current apartment availability.

**ASSISTED LIVING**  
*One & Two Bedrooms*

ACTUAL SQUARE FOOTAGE MAY VARY